

PROFINAL

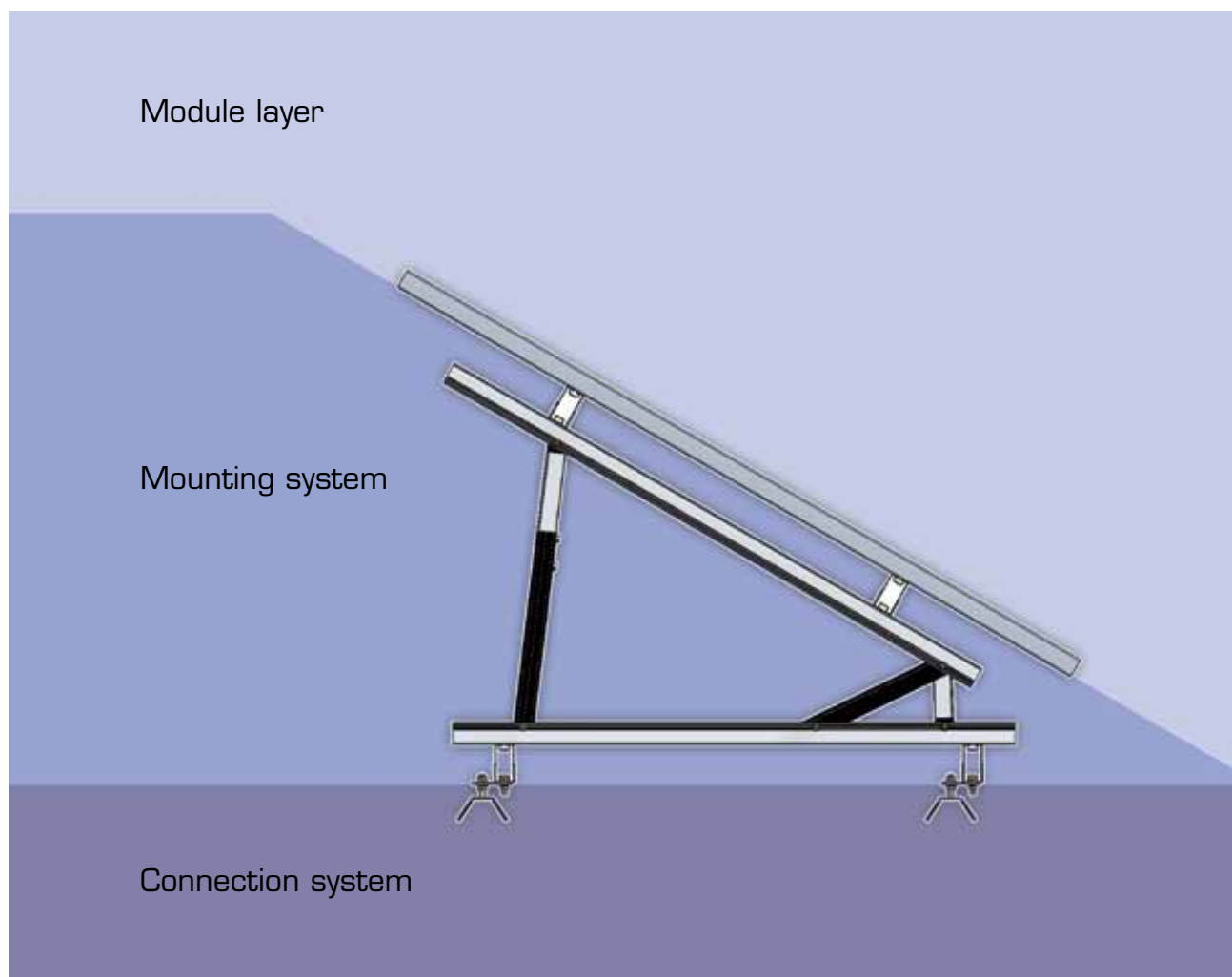
Distribution of Aluminum Profiles



The Professional
in developing aluminum
profiles for PV-Industries

MOUNTING-SYSTEMS FOR PV-MODULES

Product range



Connection System	5
Tiled Roof (Aluminum Roofhooks)	5
Tiled Roof (Stainless Steel Roofhooks)	6
Roofhook accessories (support plates)	7
Connection Systems for tin roof and corrugated Eternit	8
Adaptor plates for dowel screws	9
Accessory Parts for tin-, eternit- and kalzip-roofs	10
Mounting System	12
Standard mounting Railings (Profiles)	12
Sliding Block	14
Simple cross bracing	15
Rail connectors	16
Aluminum accessories	17
Support triangles	18
Module Layer	19
Module Clamps for framed Modules	19
Module Clamps for glass modules	19
Modules Clamps incl. Clip-Connection (Click-Fix)	20
Screws and Accessories for Module Clamps	21
Using hexagon socket screws for different Module heights	22
Screws Accessories	23
Fiat head screw	23
Hexagonal Screws for Wood	23
Cheese-Head Screw with hexagon socket	24
Hexagonal Screws	24
T-head bolts	24
Washers	25
Safety washers	25
Screw locking washers	25
Safety Screws	26
Mushroom Head Screws	26
Square Nut	26
Hexagonal Nut	27
Self-locking Nut	27
Screw Socket	28
Spring Washer	28
Pull-off Nut	29
Thrust Washer	29
Free-Field Substructures	30
Mounting System „Krinner“	30
Mounting System „Hollow-Profile“	31
Mounting System „Concrete“	32
Mounting System „Sleeper“	33
Mounting System „Sigma-Pile“	34

CONNECTION SYSTEM

Tiled Roof (Aluminum Roof-Hooks)

201.105.32-E	<p>Roofhook, persistent, consisting of baseplate and hook to swivel in</p> <p>For 32 mm battens Height of baseplate 46 mm</p>	
201.105.40-E	<p>Roofhook, persistent, consisting of baseplate and hook to swivel in</p> <p>For 40 mm battens Height of baseplate 54 mm</p>	
201.107.32-E	<p>Roofhook, with elevation adjustment, consisting of baseplate and ready-for-use hook</p> <p>For 32 mm battens Height of baseplate 46 mm</p>	
201.107.40-E	<p>Roofhook, with elevation adjustment, consisting of baseplate and ready-for-use hook</p> <p>For 40 mm battens Height of baseplate 54 mm</p>	
201.106.32-E	<p>Roofhook, lateral connection with elevation adjustment, consisting of baseplate & ready-for-use hook with T-fitting</p> <p>For 32 mm battens Height of baseplate 46 mm</p>	
201.106.40-E	<p>Roofhook, lateral connection with elevation adjustment, consisting of baseplate & ready-for-use-hook with T-fitting</p> <p>For 40 mm battens Height of baseplate 54 mm</p>	

Tiled Roof (Stainless Steel Roofhooks)

201.105.
1508040-4301



Roofhook Vario 43

Baseplate 150x80x5 mm, lower angle 40 mm, bent hook 8 mm, Material: 1.4301, angle 55°/55°/35°/5 mm please ask for separat quotation



201.105.
150x60W

Roofhook standard small

Layout B:
Baseplate 150x80x5 mm, Hook 30x5 mm, Height 130 mm



201.105.
35x6-4301

Roofhook Standard

Baseplate 180x80x5 mm, Hook 35x6 mm, Height 139 mm



201.105.
40x6-4301

Roofhook Standard

Baseplate 180x80x4 mm, Hook 40x6 mm, Height 130 mm



201.105.
140*56K-4301

Roofhook adjustable

Baseplate 144x56x5 mm, Hook 5 mm ready-for-use, Material: 1.4301



Roofhook Accessories (support plates)

201.702.2-B

Support plate 2 mm aluminum

Height compensation at unevenness



201.702.3-B

Support plate 2 mm aluminum

Height compensation at unevenness



201.702.5-B

Support plate 5 mm aluminum

Height compensation at unevenness



Connection Systems for tin roof and corrugated Eternit

301.9211-2-10x

Dowel screw for wooden substructure
Dowel screw A2

Dowel screw with hexagonal head SW7 M10*200mm
Length of thread: metric: 110mm wood: 70mm



301.9211-2-12x

Dowel screw for wooden substructure
Dowel screw A2

Dowel screw with hexagonal head SW8 M12*300mm
Length of thread: metric: 140mm Wood: 100mm



301.9216-2-10x

Dowel screw, hexagonal head ready-for-use
(Illustration similar)

1

Ready-for-use with 3 self-locking nuts A2 + EPDM-gasket M10



301.9216-2-12x

Dowel screw, hexagonal head ready-for-use
(Illustration similar)

1

Ready-for-use with 3 self-locking nuts A2 + EPDM-gasket
+ 1 big washer above the M12 gasket



301.9216-2-10x

EPDM-gasket approx. 60° Shore A
for dowel screw M10/M12



301.9221-2-10x

Approved dowel screw for wooden substructure,
Dowel screw hexagonal head ready-for-use

With special coating, ready-for-use with nuts,
washers and fungal-seal, construction inspection approved



301.9222-2-10x

Approved dowel screw for steel substructure
Dowel screw hexagonal head ready-for-use

With special coating, ready-for-use with nuts,
washers and fungal-seal, construction inspection approved



Adaptor plates for dowel screws

201.301.
82x30x5-4301

Adaptor plate stainless steel A2 for dowel screws M10

L: 82mm x D: 30mm x H: 5mm Round hole: 11mm Slot hole:
11*29,5mm, material: 1.4301; For dowel screw M10
Screw attachment in lower railing-channel



201.302.
82x40x6-B

Adaptor plate aluminum for dowel screws M10

L: 82mm x D: 40mm x H: 6mm Round hole: 11mm Slot hole:
11*29,5mm, material: aluminum; For dowel screw M10
Screw attachment in lower railing-channel



201.304.
82x40x6-B

Adaptor plate aluminum for dowel screws M12

L: 82mm x D: 40mm x H: 6mm Round hole: 13mm Slot hole:
11*29,5mm, material: aluminum; For dowel screw M12
Screw attachment in lower railing-channel



201.303.
82x30x5-4301

Adaptor plate stainless steel A2 for dowel screws M12

L: 82mm x D: 30mm x H: 5mm Round hole: 13mm Slot hole:
11*29,5mm, material: 1.4301; For dowel screw M12
Screw attachment in lower railing-channel



Accessory Parts for Tin-, Eternit- and Kalzip-roofs

101.031.
6100-B

Trapezoidal-railing
703 g/m

Length: at buyer's option
Profile can be directly attached to trapezoidal-roof
Channel for sliding block MB



101.131.6100-B

Trapezoidal-sheet railing
1047 g/m

Length: at buyer's option
Profile can be directly attached to trapezoidal-sheet-roof
Channel for sliding block MB



100.006.
40x40x40x3-B

Z-Profile aluminum

Length: 6,1 m; Dimensions: 40*40*40*3 mm



201.043.
KALZIP10-4301

Kalzip-Clip angled M10

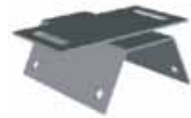
Kalzip-Clip A2 with slot hole for railing connection M10, ready-for-use with screw/nut/washer



201.042. ...

Trapezoidal-tin-shoe 4-hole

For direct attaching at trapezoidal-sheet. Optionally with mounting plate, grub screw or angle. We recommend our construction inspection approved drilling screw 6,3x2 for attaching to roof



MOUNTING SYSTEM

Standard-Mounting railings (Profiles)

101.001.6100-B

Mounting rail 40 x 40 mm
921 g/m

2

Length: 6.100 mm; span length: 1,6 m
Lower connection: DIN 933 M10
Upper connection: sliding block M8
(Length at buyer's option)



101.002.6100-B

Mounting rail 80 x 40 mm
1.252 g/m

2

Length: 6.100 mm; span length: 3,2 m
Lower connection: DIN 933 M10
Upper connection: sliding block M8
(Length at buyer's option)



101.003.6100-B

Mounting rail 40 x 40 mm
910 g/m

2

Length: 6.100 mm; span length: 1,6 m
Lower connection: DIN 933 M10
Upper connection: square nut M8 or hexagonal-nut M8
(Length at buyer's option)



101.015.6100-B

Mounting rail 40 x 40 mm
923 g/m

2

Length: 6.100 mm; span length: 1,6 m
Lateral connection: sliding block M8
Upper connection: sliding block M8



101.016.6100-B

Mounting rail 80 x 40 mm
1449 g/m

2

Length: 6.100 mm; span length: 3,2 m
Lateral connection: sliding block M8
Upper connection: sliding block M8



2 anodised versions also available from stock

101.017.6100-B

Mounting rail 80 x 40 mm
1.253 g/m

2

Length: 6.100 mm; span length: 3,2 m
Lower connection: DIN 933 M10
Upper connection: sliding block M8
(Length at buyer's option)



101.031.6100-B

Trapezoidal-railing
703 g/m

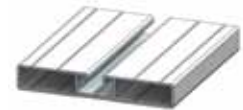
Length: at buyer's option
Profile can be directly attached to trapezoidal-sheet.
Upper channel for sliding block M8



101.032.6100-B

Trapezoidal-railing
936 g/m

Length: at buyer's option
Profile can be directly attached to trapezoidal-sheet.
Upper channel for sliding block M8



101.131.6100-B

Trapezoidal-railing
1047 g/m

Length: at buyer's option
Profile can be directly attached to trapezoidal-sheet.
Upper channel for sliding block M8



101.050.6100-B

FS-Profile 80 x 102 mm
3.010 g/m

Heavy load profile; Length: 6.100 mm
lateral connection with assembling-plate (201.026.40-B)



101.101.6100-B

„Mounting rail „Alu light“; sliding block above“
757 g/m

3

Length: 6.100 mm

Upper connection: sliding block M8

Lower connection: hexagonal-head screw: DIN 933 M10



101.103.6100-B

„Mounting rail „Alu light“; square nut above“
754 g/m

3

Length: 6.100 mm

Upper connection: square nut

Lower connection: hexagonal-head screw: DIN 933 M10



101.040.6100-B

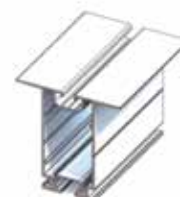
Mounting rail 80 x 40 mm
1520 g/m

3

Length: 6.100 mm

Upper connection: sliding block M8

Lower connection: with mounting plate (201.026.40-B)



101.059.6100-B

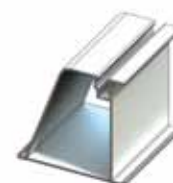
Mounting rail 99 x 99 mm
1800 g/m

3

Length: 6.100 mm

Upper connection: sliding block M8

Lower connection: with mounting plate (201.026.40-B)



Sliding Block

301.001.1-E

Sliding block to swivel in

for M8 packaging 100 pieces

Ball made from stainless steel



Simple cross bracing

101.015.6100-B

Mounting rail 40 x 40 mm
923 g/m

2

Length: 6.100 mm, span length: 1,6 m
Lateral connection: sliding block M8
Upper connection: sliding block M8



101.016.6100-B

Mounting rail 80 x 40 mm
1449 g/m

2

Length: 6.100 mm, span length: 3,2 m
Lateral connection: sliding block M8
Upper connection: sliding block M8



201.014.40-B

Cross connector (connection angle)

Cross bracing angle for 101.015.6100-B and
101.016.6100-B on 101.001.6100-B, 101.002.6100-B or
101.003.6100-B with three sliding blocks and screws
DIN 912-2-8*16



101.017.6100-B

Mounting rail 80 x 40 mm
1.253 g/m

2

Length: 6.100 mm, span length: 3,2 m
Lower connection: DIN 933 M10
Upper connection: sliding block M8
(Length at buyer's option)



201.026.40-B

Mounting plate

for attaching mounting rail to triangle
Length: 40 mm; Height: 36 mm; Diameter: 11 mm
Compability: for example 101.017.6100-B, 101.050.6100-B,
201.099.1020-B, 201.099.2040-B



Rail connectors

201.012.200-B

U-shell, Length: 200mm

3

Profile connector (alu) for mounting rails 101.001.6100-B, 101.003.6100-B and 101.015.6100-B for external connection



201.018.200-B

Profile connector, slot 200mm

3

For mounting rails 101.001.6100-B, 101.003.6100-B; 101.016.6100-B, 101.017.6100-B = 2 connectors/ connection
101.015.6100-B = 1 connector/connection



201.118.200-B

„Batch connector “Light“, slot 200 mm“

3

For mounting rails 101.101.6100-B and 101.103.6100-B
2 connectors/ connection



201.019.400-B

FS-mounting rail connector

3

For the FS-mounting rail; Compatibility with:
FS-mounting rail, 2 connectors/ connection



3 For other dimensions availability please enquire

Aluminum accessories

100.001.
40x40x3-B

Angle profile ALUMINUM 40*40*3

3

Length: 6,00 Meter; 40*40*3

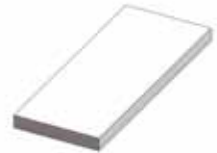


100.002.

ALUMINUM flat

3

We are delivering aluminum flat-profiles in many different dimensions



100.003.

ALUMINUM round

3

We are delivering aluminum round-profiles in many different dimensions



100.004.

ALUMINUM square-pipe

3

We are delivering aluminum square-pipes in many different dimensions



100.005.

ALUMINUM U-profile

3

We are delivering aluminum U-profiles in many different dimensions



100.006.
40x40x40x3-B

ALUMINUM Z-profile

3

Length: 6,1 Meter; 40*40*40*3 mm



Support triangles

201.099.
40x40x...x...

Triangle support

3

Construction with angle-profile 40*40*3 mm
or 40*40*5 mm



201.097.
40x40x...x...

Triangle support SOLANO

3

Construction with angle-profile 40*40*3 mm
or 40*40*5 mm



201.099-1020-B
und
201.099-2040-B

Flat roof triangle support aluminum

Foldable; adjustable from 10° to 20°
or from 20° to 40°



201.098.
40x40x5-B

Veneer mounting support

3

Constuction with angle-profile 40x40x5 mm



MODULE LAYER

Clamps for framed PV-Modules

201.004.70x...-B

End-Clamp aluminum

Length: 70 mm
Width: 30mm, 35mm, 40mm, 42mm, 45mm, 46mm, 50mm
Module support: 8mm
Please indicate module-frame height



201.013.70-B

Middle-Clamp aluminum

Length: 70 mm
Module support: 8mm; module distance: 20mm



Clamps for Thin-Film PV-Modules

201.113.100-B



End-Clamp for Thin-Film (glass) Modules; aluminum

Handy clip-connection
UV-durable EPDM-rubber gasket
Modular height adjustment
Additionally needed: Allen Screw DIN 912 A2 8x35, sliding block M8



201.104.100-B



Middle-Clamp for Thin-Film (glass) Modules; aluminum

Handy clip-connection
UV-durable EPDM-rubber gasket
Modular height adjustment
Additionally needed: Allen Screw DIN 912 A2 8x35, sliding block M8



201.213.70-B



Middle-/End-Clamp for Thin-Film (glass) Modules; aluminum

Rubber-Type 6,8mm, Patented Type with EPDM-Rubberbed
Handy end stop to protect module damages
Optional thief-protection available
Additionally needed: Allen Screw DIN 912 A2 8x35, sliding block M8



Module-Clamps incl. Clip-Connection (Click-Fix)

201.9742-E ...

End-Clamp; aluminum incl. Clip

Ready-for-use incl. Screw, Nut and Clip-Connection

Higher tensile strength than conventional connectors because of special aluminum alloy. This handy clip is intermateable with all Profinal-Profiles (upper connection).

Please indicate module frame height



201.9745-M- ...


Middle-Clamp; aluminum

Ready-for-use with Screw, Nut and Clip-Connection

Higher tensile strength than conventional connectors because of special aluminum alloy. This handy clip is intermateable with all Profinal-Profiles (upper connection).

Please indicate module frame height



 Save time and money thru shorter assembly time!


Screws and Accessories for Module Clamps

301.912-2-8*30	M8*30 mm
301.912-2-8*35	M8*35 mm
301.912-2-8*40	M8*40 mm
301.912-2-8*45	M8*45 mm
301.912-2-8*50	M8*50 mm
301.912-2-8*55	M8*55 mm
301.912-2-8*60	M8*60 mm
301.9250-2-8.4	Locking Washer A2 8,4mm



Utilization of Allen-Screws for different Module-Heights

Module-Height	Screw for railings with sliding block	Security-Rail (only with sliding block profile)	Screw for railings with square nut 5
32 mm	Allen-Screw, M8*35 mm		Allen-Screw, M8*35 mm or *40 mm
34 mm	Allen-Screw, M8*35 mm		Allen-Screw, M8*35 mm or *40 mm
35 mm	Allen-Screw, M8*40 mm	x	Allen-Screw, M8*40 mm or *45 mm
36 mm	Allen-Screw, M8*40 mm	x	Allen-Screw, M8*40 mm or *45 mm
38 mm	Allen-Screw, M8*40 mm		Allen-Screw, M8*40 mm or *45 mm
40 mm	Allen-Screw, M8*45 mm	x	Allen-Screw, M8*45 mm or *50 mm
41 mm	Allen-Screw, M8*45 mm	x	Allen-Screw, M8*45 mm or *50 mm
42 mm	Allen-Screw, M8*45 mm		Allen-Screw, M8*45 mm or *50 mm
45 mm	Allen-Screw, M8*50 mm	x	Allen-Screw, M8*50 mm or *55 mm
46 mm	Allen-Screw, M8*50 mm	x	Allen-Screw, M8*50 mm or *55 mm
50 mm	Allen-Screw, M8*50 mm	x	Allen-Screw, M8*55 mm or *60 mm

 The screw length is depending on the mounting rail, the square nut, the sliding block, the clip, the clamp and the module frame. For individual advise please call us.

5 For this option are both screws possible to use

SCREWS ACCESSORIES

Fiat-Head Screw

301.9810-0-8x80	M8 * 30 mm
301.9810-0-8x100	M8 * 35 mm
301.9810-0-8x120	M8 * 40 mm

Fiat-Head Screw with TX-Drive, Stainless Steel, construction inspection approved, a.o. for attaching of roof hooks



Hexagonal-Head Woodscrews

301.571-2-8x80	M8 * 80 mm
301.571-2-10x80	M10 * 80 mm
301.571-2-8x100	M8 * 100 mm
301.571-2-10x100	M10 * 100 mm
301.571-2-8x120	M8 * 120 mm
301.571-2-10x120	M10 * 120 mm
301.571-2-8x140	M8 * 140 mm
301.571-2-10x140	M10 * 140 mm
301.571-2-8x160	M8 * 160 mm
301.571-2-10x160	M10 * 160 mm
301.571-2-8x180	M8 * 180 mm
301.571-2-10x180	M10 * 180 mm
301.571-2-8x200	M8 * 200 mm
301.912-2-10*200	M10 * 200 mm

Hexagonal-Woodscrews, a.o. for attaching of roof hooks



Cheese-Head Screw with hexagon socket

301.912-2-... x ...

M8*... mm

301.912-4-... x ...

M8*... mm



Cheese-Head Screw with hexagon socket with full thread in A2 and A4 following DIN 912;
a.o. Dimensions M10*25 for the lower railing channel No.: 101.001.6100-B

Hexagonal Screws

301.933-2-... x ...

M8*... mm

301.933-4-... x ...

M8*... mm



Hexagonal Screws with full thread in A2 and A4 following DIN 933;
a.o. Dimensions M10*25 for the lower railing channel No.: 101.001.6100-B

T-Head bolts

301.9415-2-8x20

M8*20 mm

301.9415-2-10x20

M10*20 mm

301.9415-2-8x25

M8*25 mm

301.9415-2-10x25

M10*25 mm

301.9415-2-8x30

M8*30 mm

301.9415-2-10x30

M10*30 mm

301.9415-2-8x35

M8*35 mm

301.9415-2-10x35

M10*35 mm



T-Head bolts A2 and A4 for mounting rail Type 28/15
(further railings by request)

Washers

		inner	outer
301.9021-2- ...	Für M8:	8,4 mm	24,0 mm
301.9021-2- ...	Für M10:	10,5 mm	30,0 mm
301.9021-2- ...	Für M12:	13,0 mm	37,0 mm



Washer with large outer diameter in A2 and A4 following DIN 9021

Washers

		inner	outer
301.125-2- ...	Für M8:	8,4 mm	16,0 mm
301.125-2- ...	Für M10:	10,5 mm	20,0 mm
301.125-2- ...	Für M12:	13,0 mm	24,0 mm



Washer in A2 and A4 following DIN 125

Safety Washers

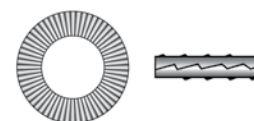
		inner	outer
301.9250-2-8,4	Für M8:	8,4 mm	13,0 mm
301.9250-2-10,5	Für M10:	10,5 mm	26,0 mm
301.9250-2-13,0	Für M12:	13,0 mm	18,0 mm



„Safety Washer „S““ a.o. for different Module-Clamps“

Screw Locking Washers

		inner	outer
301.25201-4-8,7	Für M8:	8,7 mm	16,5 mm
301.25201-4-10,7	Für M10:	10,7 mm	16,0 mm
301.25201-4-13,0	Für M12:	13,0 mm	19,5 mm



Screw locking washer in A4 following DIN 25201

Safety Screws

301.125-2- ...	M8 * 20 mm
301.125-2- ...	M8 * 30 mm
301.125-2- ...	M8 * 40 mm



Safety screw mushroom head in A2 similar to ISO 7380 from stock

Mushroom Head Screws

301.603-2-...*...	M10*20 mm
301.603-4-...*...	M10*20 mm
301.603-2-...*...	M10*25 mm
301.603-4-...*...	M10*25 mm
301.603-2-...*...	M10*30 mm
301.603-4-...*...	M10*30 mm



Mushroom Head Screw with square in A2 and A4 following DIN 603

Square Nut

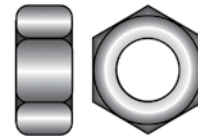
301.557-2-8	M8 (A2)
301.557-4-8	M8 (A4)
301.557-2-10	M10 (A2)
301.557-4-10	M10 (A4)
301.557-2-12	M12 (A2)
301.557-4-12	M12 (A4)



Square Nut in A2 and A4 following DIN 557

Hexagonal Nut

301.934-2-8	M8 (A2)
301.934-4-8	M8 (A4)
301.934-2-10	M10 (A2)
301.934-4-10	M10 (A4)
301.934-2-12	M12 (A2)
301.934-4-12	M12 (A4)



Hexagonal Nut in A2 and A4 following DIN 934

Hexagonal Nut

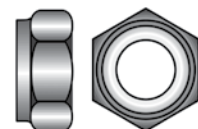
301.9345-2-8	M8 (A2)
301.9345-4-8	M8 (A4)
301.9345-2-10	M10 (A2)
301.9345-4-10	M10 (A4)
301.9345-2-12	M12 (A2)
301.9345-4-12	M12 (A4)



Hexagonal Nut similar to DIN 6923 with flange and gear teeth in A2 and A4

Self-Locking Nut

301.985-2-8	M8 (A2)
301.985-4-8	M8 (A4)
301.985-2-10	M10 (A2)
301.985-4-10	M10 (A4)
301.985-2-12	M12 (A2)
301.985-4-12	M12 (A4)



Self-locking nut low type in A2 and A4 following DIN 985

Screw Sockets

301.9290-2-8	M8 (A2)
301.9290-4-8	M8 (A4)
301.9290-2-10	M10 (A2)
301.9290-4-10	M10 (A4)
301.9290-2-12	M12 (A2)
301.9290-4-12	M12 (A4)

Screw socket with full inner thread, round type in A2 and A4



Screw Sockets

301.9300-2-8	M8 (A2)
301.9300-4-8	M8 (A4)
301.9300-2-10	M10 (A2)
301.9300-4-10	M10 (A4)
301.9300-2-12	M12 (A2)
301.9300-4-12	M12 (A4)

Screw socket mit full inner thread, hexagonal type in A2 and A4



Spring Washers

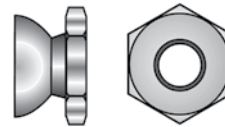
301.127-2-8	M8 (A2)
301.127-4-8	M8 (A4)
301.127-2-10	M10 (A2)
301.127-4-10	M10 (A4)
301.127-2-12	M12 (A2)
301.127-4-12	M12 (A4)

Spring washer A2 and A4 following DIN 127



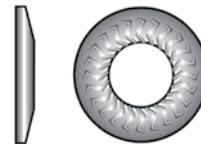
Pull-Off Nut

301.9305-2-6	M6
301.9305-2-8	M8
301.9305-2-10	M10
301.9305-2-12	M12



Thrust Washers

301.9265-2-8	M8
301.9265-2-10	M10
301.9265-2-12	M12

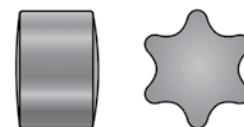


Thrust washer M-type (medium) for high torque connection with standard support

301.9360-2- ...	Shear Connector
For attaching dowel screws to concrete; Shear Connector = VA; Mortar Cartridge = VA-P	



301.9495 ZN- ...	Safety-Stars
Material: Zinc pressure casting; for TX 10-40, Safety stars for TX-drive	

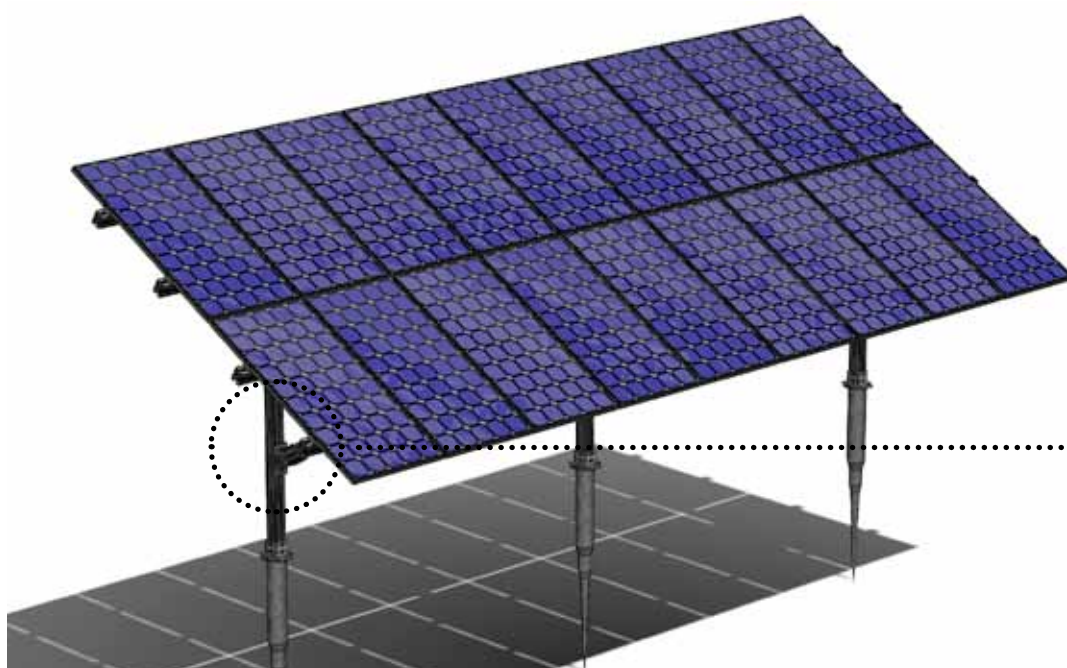
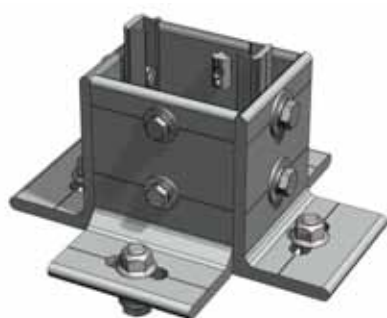


301.9490-2-6,25	Ball
Balls stainless 304 6; 25mm type 40; To secure allen-screws SW6, Ball to bang in	

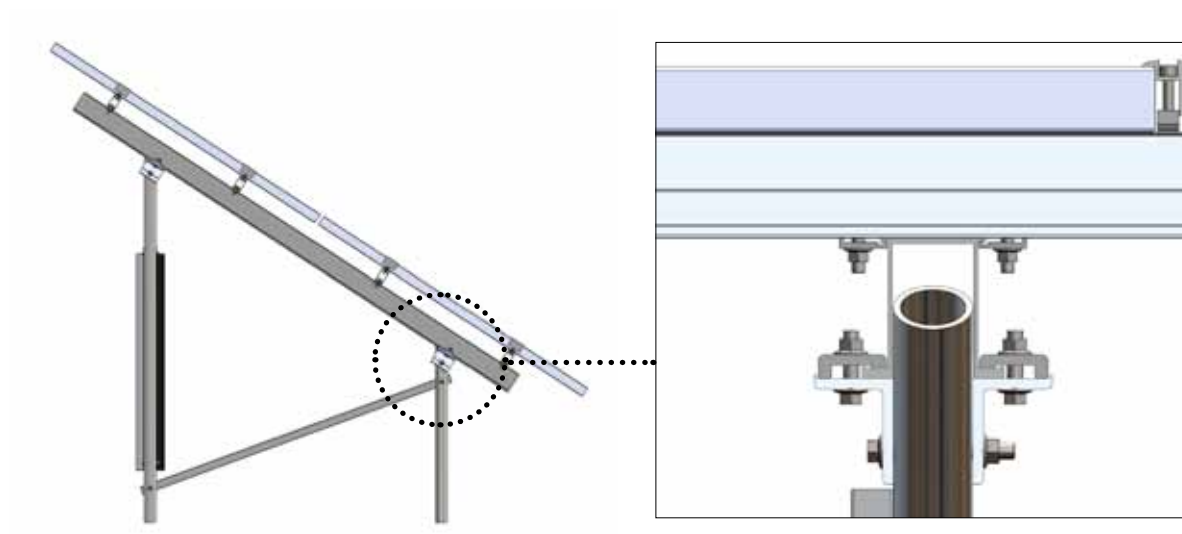


FREE-FIELD SUBSTRUCTURES

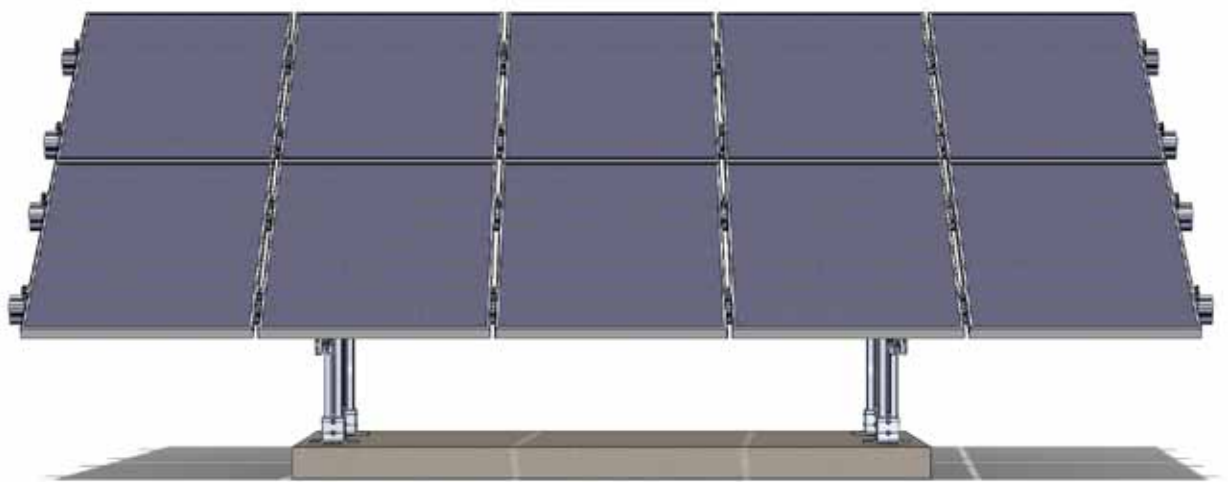
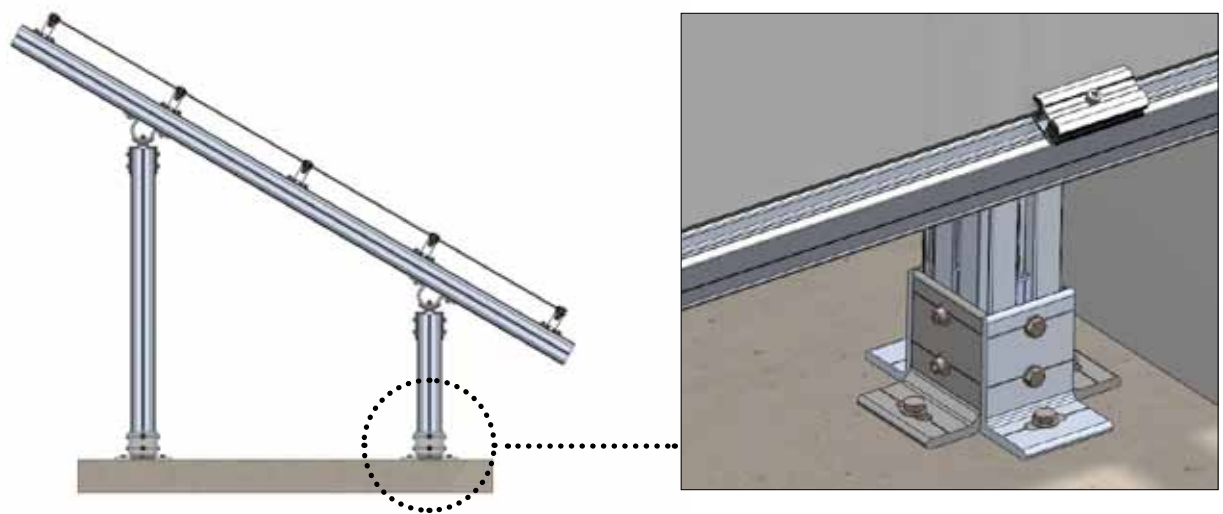
Mounting System „Krinner“



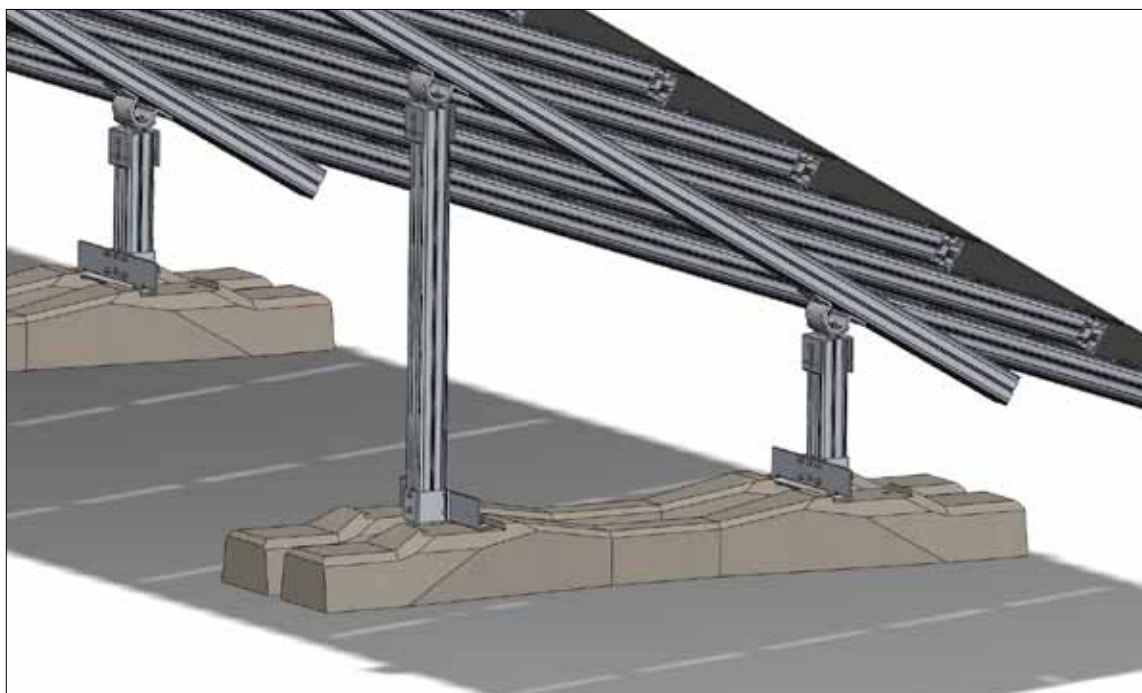
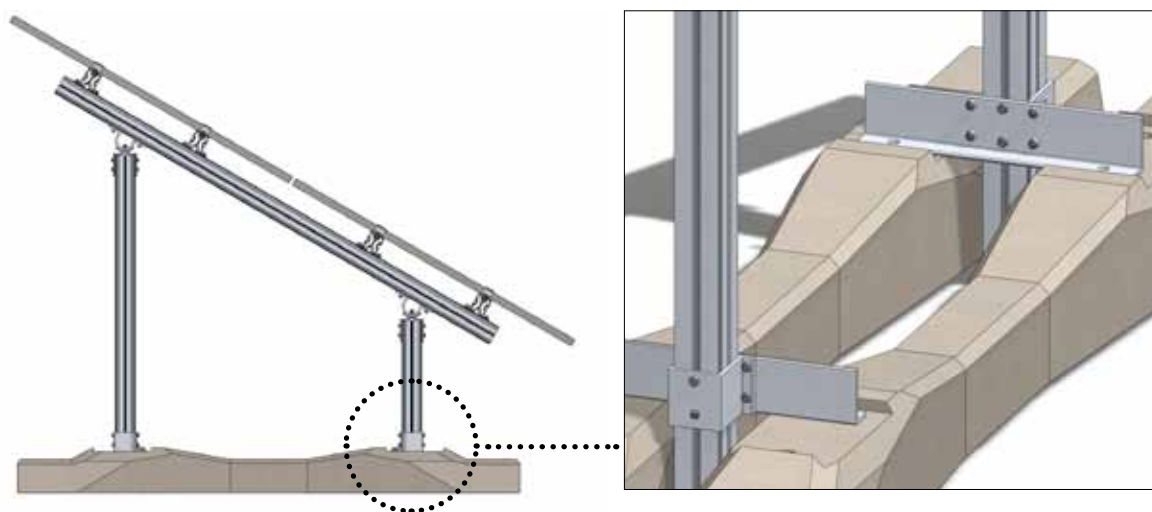
Mounting System „Hollow-Profile“



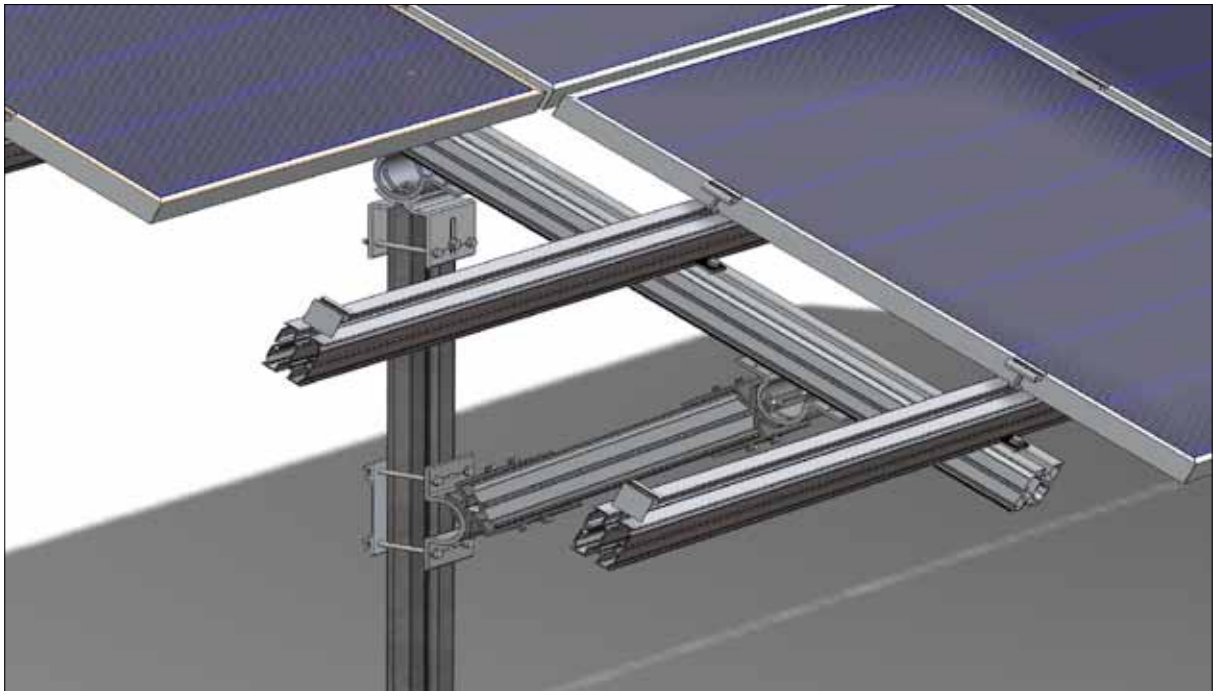
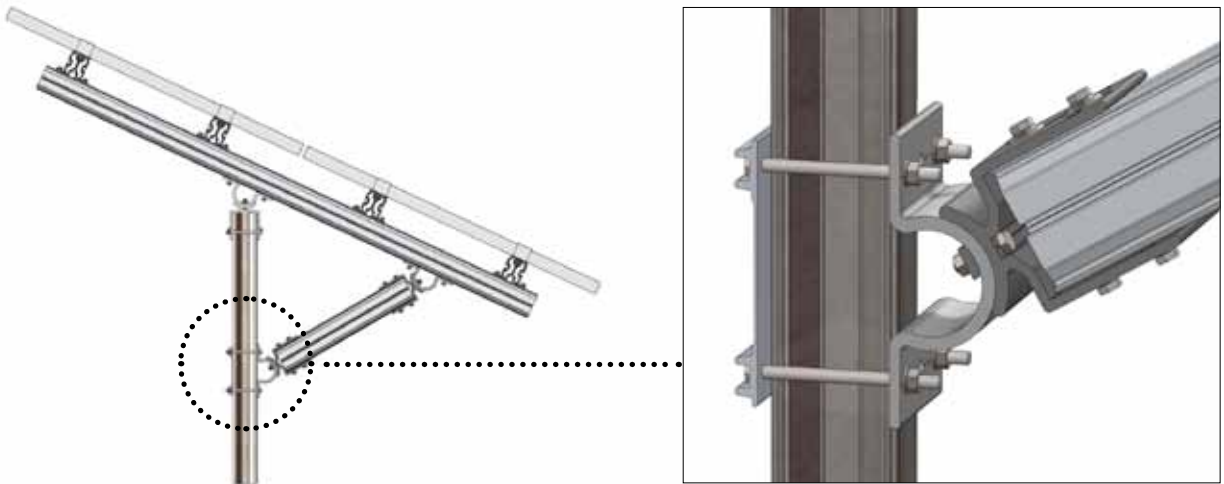
Mounting System „Concrete“



Mounting System „Sleeper“



Mounting System „Sigma-Pile“



Profinal Handelsgesellschaft mbH

Bunsenstraße 5
26389 Wilhelmshaven

T: 04421 7557970

F: 04421 7557979

E: info@profinal-aluminium.de

I: www.profinal-aluminium.de

Stock:

An der Junkerei 48 M

26389 Wilhelmshaven

T: 04421 5071755

As Partner of Company WASI
we guarantee the following Qualities:



All information non-binding and subject to change.
Misstakes, falsity and changes to reserve.
Please notice the documentation of products.